

VAUGHN FARMS Genetics *for the* Future PRODUCTION SALE

MARCH 18, 2017 • 1 P.M.

Napoleon Livestock • Napoleon, North Dakota

SELLING 66 LOTS

50 BULLS

Red & Black - All Polled - Purebred & Lim-Flex

16 BRED FEMALES

Red & Black - All Polled - Purebred
Sell bred to DLV Xerox & DLVL Bicep

SALE HIGHLIGHTS

SIRES REPRESENTED:

DLVL Xerox - DLVL Bicep
DLVL Young Gun - TREF Zeus
JYF Zeek - Wulfs Wagon Train
SYES User Friendly & Others

Broadcast Live on

DVAuction
Broadcasting Real-Time Auctions

For Sale Updates

www.VaughnFarmsLimousin.com



VAUGHN FARMS

Family Owned & Operated

Tom & Rita Vaughn & Sons

9741 142nd Ave. NE

Cavalier, ND 58220

H: 701/265-4097

www.vaughnfarmslimousin.com

Tom cell: 701/520-0110

David cell: 701/520-2556

Craig cell: 701/520-1624

e-mail: tomv2@polarcomm.com



DLVL DEW THE DEW 664D

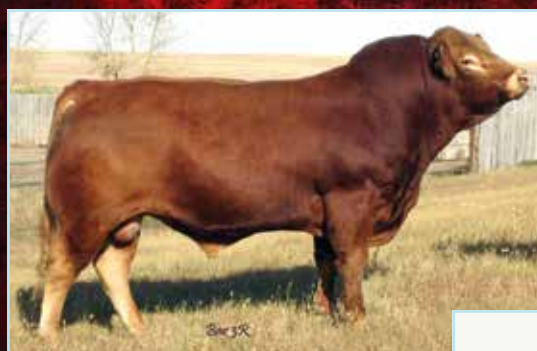
3/19/16 - HOMO Polled - Red - PB
GV Austin 701A x DLVL Miss Xcellsior 227Z
CE: 12 BW: -0.2 WW: 79 YW: 108 MK: 28
CM: 7 SC: 0.6 DC: 20 YG: -.18 CW: 29
RE: .88 MB: -.08 \$MI: 52
BW: 75 - Adj. WW: 696



TOMV DIESEL 619D

3/1/16 - HOMO Polled - Red - PB
GV Austin 701A x Miss Tom 118Y
CE: 9 BW: 1.1 WW: 76 YW: 97 MK: 28
CM: 8 SC: 0.6 DC: 17 YG: -.34 CW: 24
RE: .94 MB: -.33 \$MI: 43
BW: 82 - Adj. WW: 786

HERD SIRES



DLVL YOUNG GUN 125Y

HOMO Polled - Red - PB
Wulfs Wagon Train 3197W x DLVL Penny 408P
CE: 6 BW: 3.5 WW: 67 YW: 88 MK: 45
CM: 6 SC: 0.8 DC: 46 YG: -.41 CW: 27
RE: .75 MB: -.34 \$MI: 41
BW: 80 - Adj. WW: 752

Top-selling bull in our 2012 sale purchased by Bar 3R Limousin, SK. Semen \$30, contact LIMI-Gen. HIS PROGENY SELL.



DLVL BICEP 491B

HOMO Polled - Red - PB
TREF Zion 636X x DLVL Sky 605S
CE: 12 BW: -1.0 WW: 60 YW: 88 MK: 22
CM: 3 SC: 0.3 DC: 32 YG: -.31 CW: 21
RE: .50 MB: -.48 \$MI: 33
BW: 87 - Adj. WW: 723 - Adj. YW: 1,302
Owned with Jon Sutton, SD.
Semen \$30, contact LIMI-Gen
HIS FIRST PROGENY SELL.